

TACHIT[®]

INSTRUCTION MANUAL AND PARTS LIST FOR TACH-IT Z-CUT 2 CAROUSEL DEFINITE LENGTH PRESSURE SENSITIVE TAPE DISPENSER



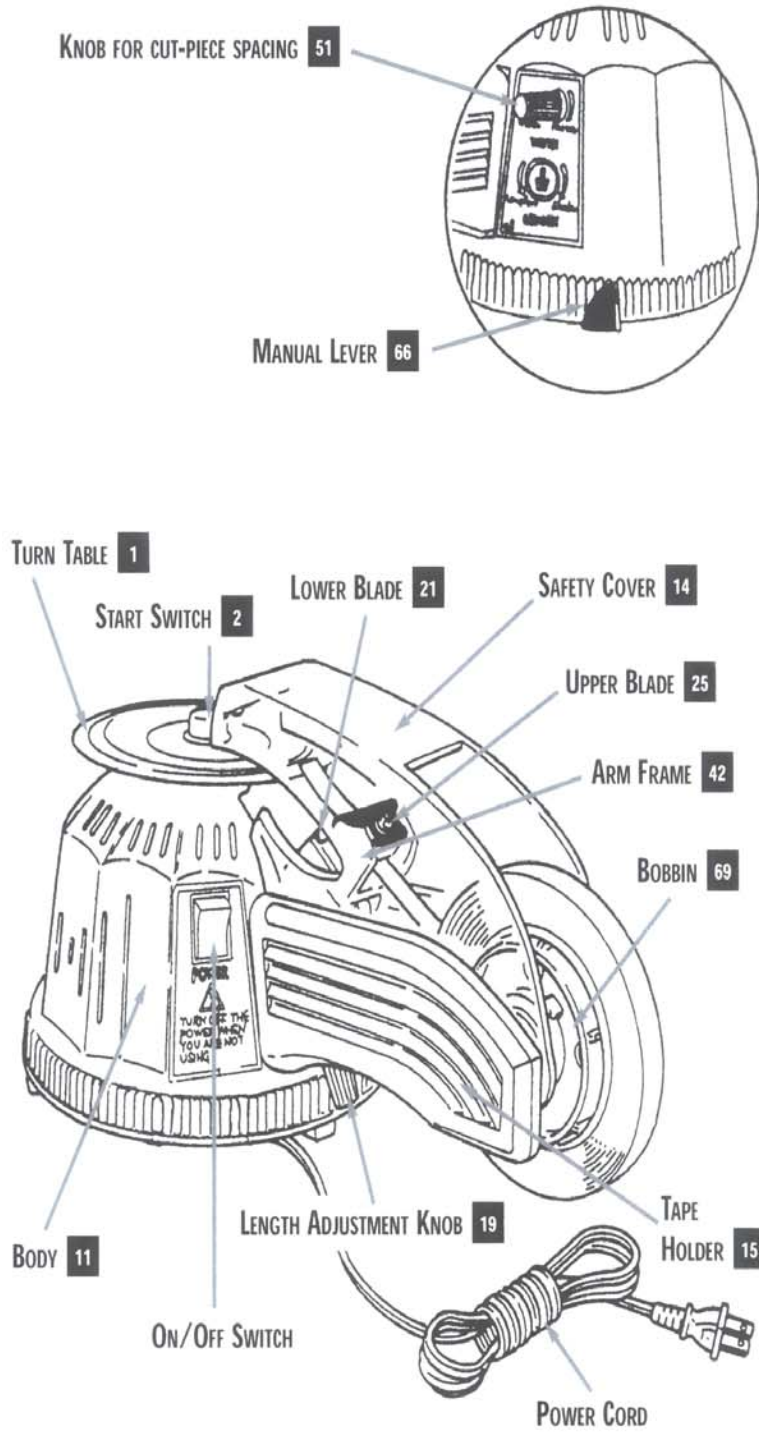
Ben Clements and Sons, Inc. / Clements Industries, Inc.
50 Ruta Court, South Hackensack, New Jersey 07606 USA. 201-440-5500, 1-800-222-5540, fax 201-440-1455

Tach-It (UK) England, Clements Industries Japan, Clements Industries Inc. Korea
Tach-It and Twisters are registered, copyrighted or trademarks of Clements Industries, Inc.

© Ben Clements & Sons, Inc. and Clements Industries, Inc. 01/04

Printed in USA

Z-CUT 2 OVERVIEW:



Z-CUT 2 - CAUTIONS (READ BEFORE FIRST USE):

- 1) Make Sure the On/Off switch is turned to the “Off” position before you plug the Z-Cut 2.
- 2) When loading the tape, make sure the On/Off switch is in the “Off” position.
- 3) The blades of the Z-Cut 2 are very sharp. When the machine is in operation, make sure the safety cover is down.
- 4) If there are finger marks, oils, and or dirt on the carousel, the tape won't stick properly, so use a clean dry cloth to clean the carousel. Note: For major cleaning, wipe the carousel off the benzene or alcohol. Never use paint thinner.
- 5) Do not run the Z-Cut 2 without tape in the proper feeding position as this will shorten the life of the motor.
- 6) This is an industrial tape dispenser and not designed for home use or for use near children.
- 7) The Z-Cut 2 can be used effectively by more than one operator at a time. Proper ventilation and an occasional rest for the motor may be needed.
- 8) Be careful when removing tape for the Z-Cut 2. If the carousel is accidentally twisted the cycle may begin inadvertently.
- 9) When not in used, remove the plug of the Z-Cut 2 from the power outlet.
- 10) When performing any maintenance or cleaning remove the plug of the Z-Cut 2 from the power outlet.
- 11) Do not pick up or move the Z-Cut 2 by holding the carousel.
- 12) The Z-Cut 2 is intended for the cutting of pressure sensitive tapes. Cutting of other materials or use of the Z-Cut 2 for other than its intended applications voids all warranties expressed and implied.

Z-CUT 2 - HOW TO LOAD THE TAPE SPOOL:

- 1) The On/Off Switch must be in the “Off” position.
- 2) Choose the right size Bobbin (69) for the tape to be used on the machine.
Internal Diameter: 25mm (1”), 32mm (1 1/4”) or 78mm (3”).
Outside Diameter: Up to 130mm (5 1/4”).
- 3) Put the tape on the Bobbin make sure it feeds from the top of the roll. Also make sure the tape roll is pushed against the flange of the Bobbin. See Figure 1.
- 4) Pull out approximately 4” of tape from the spool and insert the Bobbin into the Tape Holder (15)

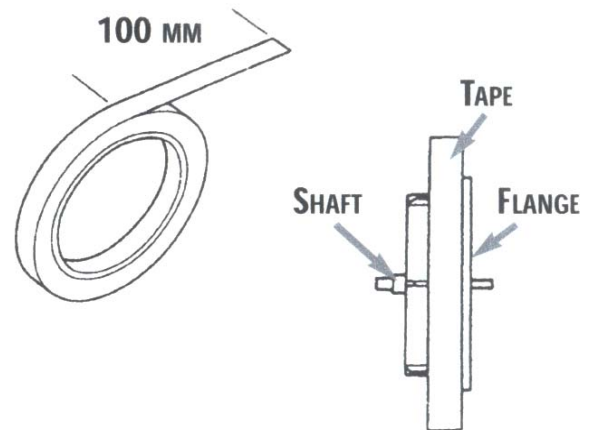


Figure 1

Z-CUT 2 - HOW TO LOAD THE TAPE:

- 1) The On/Off switch must be in the “Off” position.
Open the Safety Cover (14). Move the Arm Frame (42) by sliding the Manual Lever (66) back and forth.
- 2) Set the Blades as if they were going to “Bite” onto the carousel. See Figure 2.
- 3) Bring the Arm Frame (42) away from the carousel.

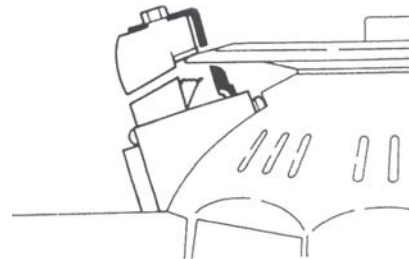
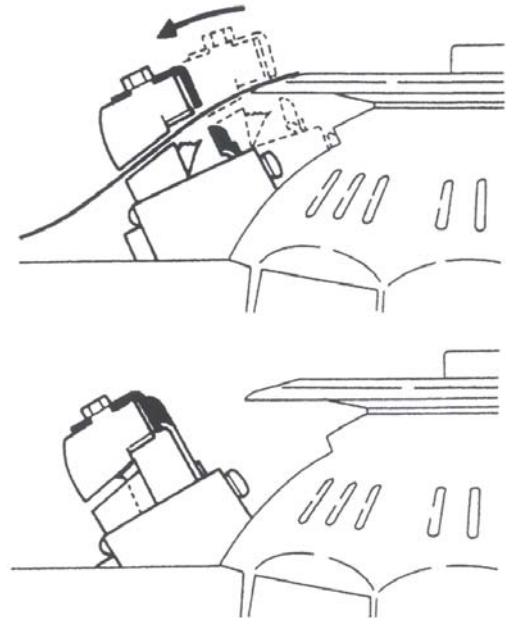


Figure 2

Z-CUT 2 - HOW TO LOAD THE TAPE CONTINUED:

Figure 3

- 4) Pull the tape through the Blades and affix the tape to the carousel. See Figure 3. It is suggested that when applying the tape to the carousel, it is applied to the middle of the carousel. This will help ensure proper loading the first time.
- 5) Close Safety Cover (14).
- 6) If the tape wasn't set correctly, repeat steps 1-5 above.



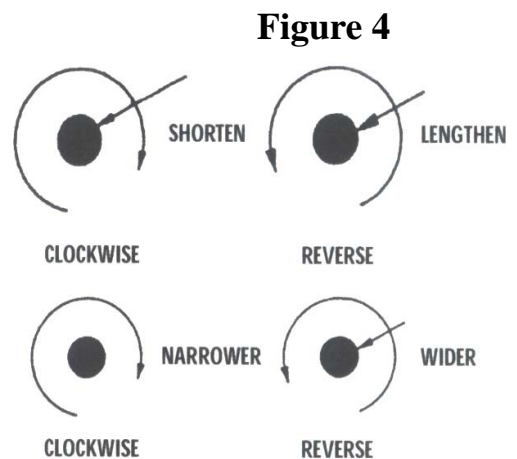
Z-CUT 2 - OPERATING THE UNIT:

- 1) The On/Off switch must be put to the "On" position.
- 2) Press the Start Switch (2) in the center of the carousel. The cut pieces of tape will be distributed about one half to two thirds of the way around the carousel.
- 3) Before you begin production with the Z-Cut 2 test the process by cutting a few pieces of tape and make sure they are the desired length.
- 4) After all the tape has been taken from the carousel, push the Start Switch (2) again. It is important that the tape be removed before pressing the Start Switch (2), otherwise the tape will feed back into the machine and begin overlapping and jamming the unit.
- 5) The motor of the Z-Cut 2 is thermal protected. If the unit reaches too high of a temperature, the machine will shut down automatically. Wait for the machine to cool before continuing operation.
- 6) Whenever the Safety Cover (14) is open, the machine will not operate.

Z-CUT 2 - ADJUST TAPE LENGTH AND SPACING:

The operator can adjust the length of the cut piece of tape as well as the spacing between the cut pieces of tape.

- 1) To adjust for the length of the tape, turn the Length Adjustment Knob (19) until the desired length is achieved. See Figure 4.
- 2) To adjust the spacing of the tape on the carousel, turn the Knob for Cut Piece Spacing (51) until the desired spacing is achieved. Do not make the spacing so close the tape overlaps as this will create problems. See Figure 4.



Z-CUT 2 - HOW TO REPLACE AND ADJUST THE BLADES:

The blades on the Model Z-Cut 2 will eventually dull and need replacing. When this occurs it is important that the blades be changed as soon as possible to avoid any damage to the machine. The life of the blades will depend upon the type, quality, weight, and adhesive on the tape being used in the machine. Sharpening the blades is not recommended.

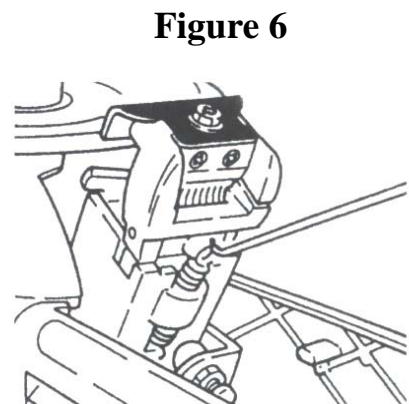
HOW TO REMOVE THE UPPER BLADE (25):

- 1) Remove the 4mm screw with a screwdriver.
- 2) Take off the Upper Blade (25). See Figure 5.



HOW TO REMOVE THE ARM FRAME (42):

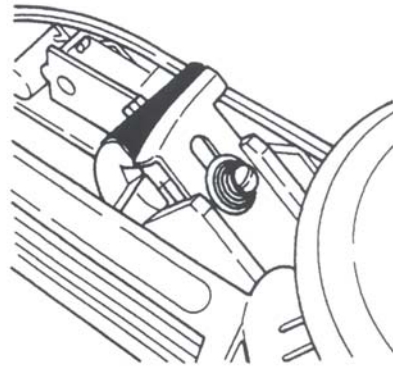
- 1) Remove the Spring
- 2) Raise the Arm Frame (42) by using Manual Lever (66).
- 3) Pull the Arm Frame (42) out. See Figure 6.



HOW TO REMOVE THE LOWER BLADE (21):

- 1) Remove the Screw using a screwdriver.
- 2) Pull the Lower Blade (21) from the machine. See Figure 7. Please note if you have trouble removing the Lower Blade, use the Manual Lever (66) to cycle the cutter and this will raise the blade.

Figure 7



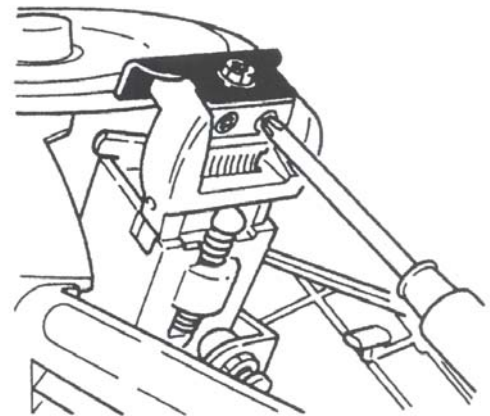
HOW TO INSTALL THE NEW BLADES:

THE NEW BLADES ARE INSTALLED BY REVERSING THE INSTRUCTIONS USED TO REMOVE THE BLADES. IT IS IMPORTANT THAT WHEN REINSTALLING THE BLADES THE LOWER BLADE (21) AND THE ARM FRAME (42) ARE FIRMLY INSTALLED.

HOW TO ADJUST THE UPPER BLADE (25):

- 1) Use the 2 adjustment screws located behind Upper Blade (25). Adjust the Upper Blade (25) inward by alternately tightening the 2 screws. Note: if you have to force the blade out, it may collide with the Lower Blade (21) during the cycle.
- 2) Load the tape as previously instructed and try to cycle the machine.
- 3) Once the adjustments are made tighten the top screw firmly.
- 4) Try to cycle the machine again, if the adjustments are made properly the tape will cut and the machine will cycle correctly. If the tape is cutting, but not cleanly tighten the adjustment screws a little at a time and try again.

Figure 8



Z-CUT 2 - SPECIFICATIONS:

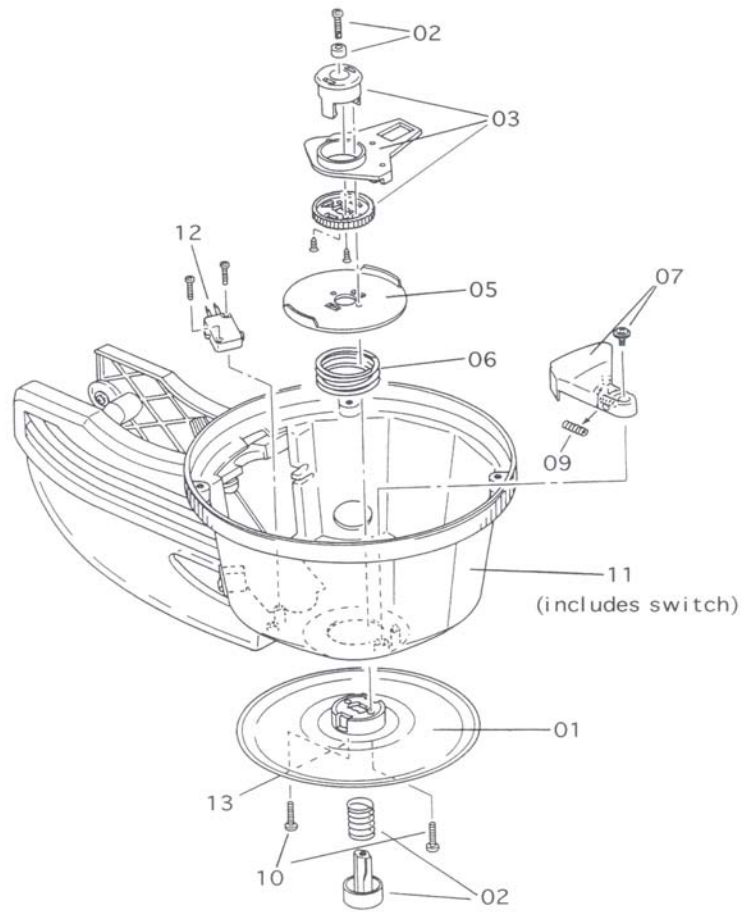
- | | | |
|-------------------------|---|---|
| 1) Cutting Length: | From 13 mm (.51”) to 60mm (2/36”) | |
| 2) Tape Width: | From 3mm (.12”) to 25mm (.98”) | |
| 3) Core and Roll Sizes: | Internal (Core) Diameter—25mm (1”), 32mm (1 1/4”), 78mm (3”). Outside Diameter—up to 130mm (5 1/4”) | |
| 4) Recommended Tapes | Cellophane Tapes Vinyl Tape Teflon Tape Paper Tape Cotton Cloth Tape Mylar Tape Aluminum Foil Tape And Many More | Masking Tape Polyethylene Tape Nomex Tape Acetate Cloth Tape Glass Cloth Tape Double Sided Tape Soft Forming Tape |
| 5) Power Requirements | AC 120 Volt, 160 watts | |
| 6) Dimensions | 300mm width, 165mm height, 170mm depth 11.8” width, 6.5” height, 6.7” depth | |
| 7) Weight | 6.4 Lbs, (2.85 kgs) | |

Z-CUT 2 - PARTS LIST:

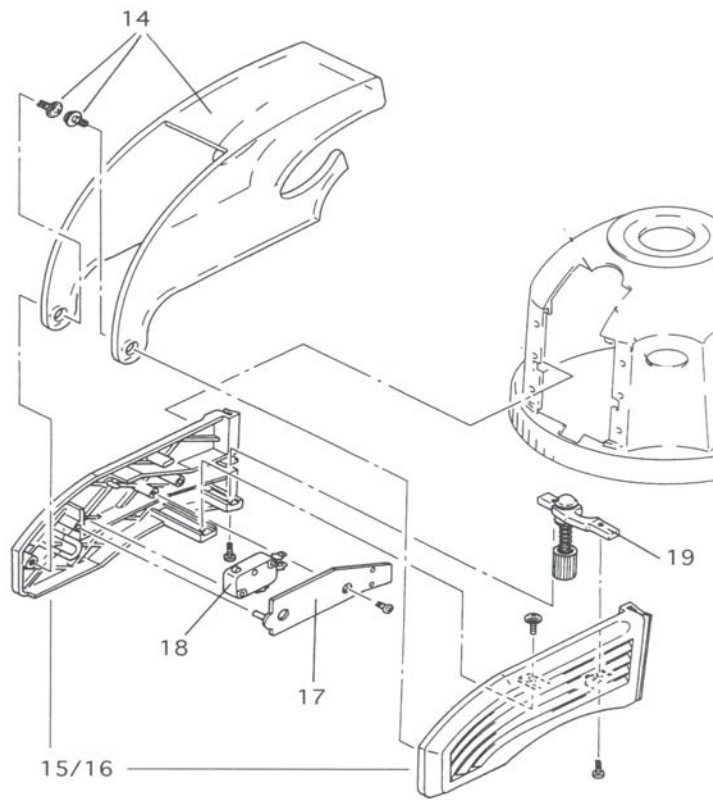
| REFERENCE NUMBER | PART NUMBER | DESCRIPTION |
|-----------------------------|------------------------|----------------------------------|
| 1 | 725020 | TURN TABLE FOR Z-CUT 2 |
| 2 | 725022 | START SWITCH WITH BUTTON |
| 3 | 725024 | RATCHET BOARD AND GEAR SET |
| 5 | 725026 | SPLIT PLATE |
| 6 | 725028 | SPRING |
| 7 | 725030 | MICRO SWITCH LEVER WITH SCREW |
| 9 | 725034 | MICRO SWITCH SPRING |
| 10 | 725036 | SCREW (2 PC) |
| 11 | 725038 | BODY CASE |
| 12 | 725040 | MICRO SWITCH |
| 14 | 725122 | SAFETY COVER |
| 15-16 | 725124 | TAPE HOLDER SET (LEFT AND RIGHT) |
| 17 | 725126 | MICRO SWITCH COVER |
| 18 | 725128 | MICRO SWITCH |
| 19 | 725130 | KNOB WITH SCREW |
| 21-24 | 725042 | LOWER BLADE SET |
| 25-26 | 725044 | UPPER BLADE SET |
| 27 | 725046 | INWARD ARM |
| 28 | 725048 | SPRING AND SCREW |
| 29 | 725050 | TAPE BITE |
| 30 | 725052 | RUBBER STOPPER |
| 31 | 725054 | PIN (LARGE) |
| 32 | 725056 | PIN (SMALL) |
| 33 | 725058 | TAPE BITE BAR |
| 34 | 725062 | NUT |
| 35 | 725064 | A—CAM |
| 36 | 725066 | B—CAM |
| 37 | 725068 | C—CAM |
| 38 | 725070 | D—CAM |
| 39 | 725072 | E—CAM |
| 40 | 725074 | F—CAM |
| 41 | 725076 | CAM SHAFT |
| 42 | 725078 | ARM FRAME |
| 43 | 725080 | SPRING AND SCREW |
| 44 | 725082 | SPRING |
| 45 | 725106 | BASE |

| REFERENCE NUMBER | PART NUMBER | DESCRIPTION |
|-----------------------------|------------------------|-------------------------------|
| 46 | 725108 | LEVER WITH SCREW |
| 47 | 725110 | LEVER WITH SCREW |
| 48 | 725118 | FUSE HOLDER |
| 49 | 725120 | RUBBER FOOT |
| 50 | 725112 | LEFT CHASSIS |
| 51-54 | 725084 | KNOB SET |
| 55 | 725086 | MOTOR CHASSIS |
| 56 | 725088 | LEVER WITH SCREW |
| 57 | 725089 | SPRING |
| 58 | 725092 | GEAR A WITH WASHER AND SCREW |
| 59 | 725094 | GEAR B |
| 60 | 725096 | GEAR C |
| 61-62 | 725098 | GEAR COVER AND SCREW ASSEMBLY |
| 63 | 725100 | MOTOR |
| 64 | 725102 | PINION GEAR |
| 65 | 725104 | MOTOR FAN |
| 66 | 725135 | TAPE SET LEVER WITH SCREW |
| 67 | 725137 | COIL SPRING |
| 68 | 725139 | LEVER |
| 69 | 725136 | BOBBIN GRAY ALL 3 PCS |
| 70 | 725138 | BOBBIN ORANGE LARGE 1 1/4" |
| 71 | 725140 | BOBBIN ORANGE SMALL 1" |
| | 720318 | FUSE 2.0 AMPS |
| | 725440 | ON/OFF SWITCH |

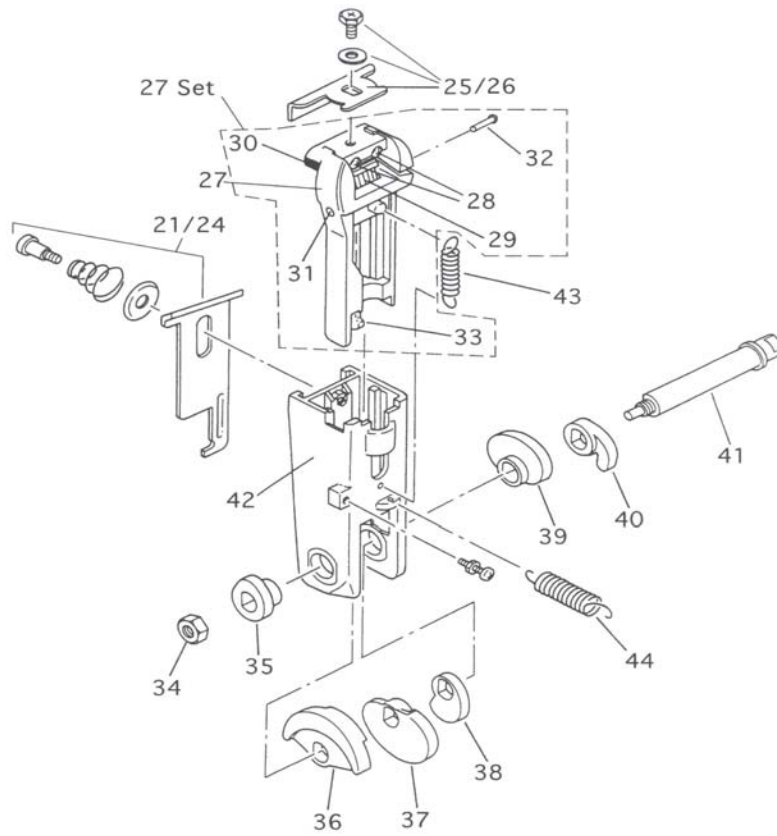
Z-CUT 2 - PARTS IDENTIFICATION:



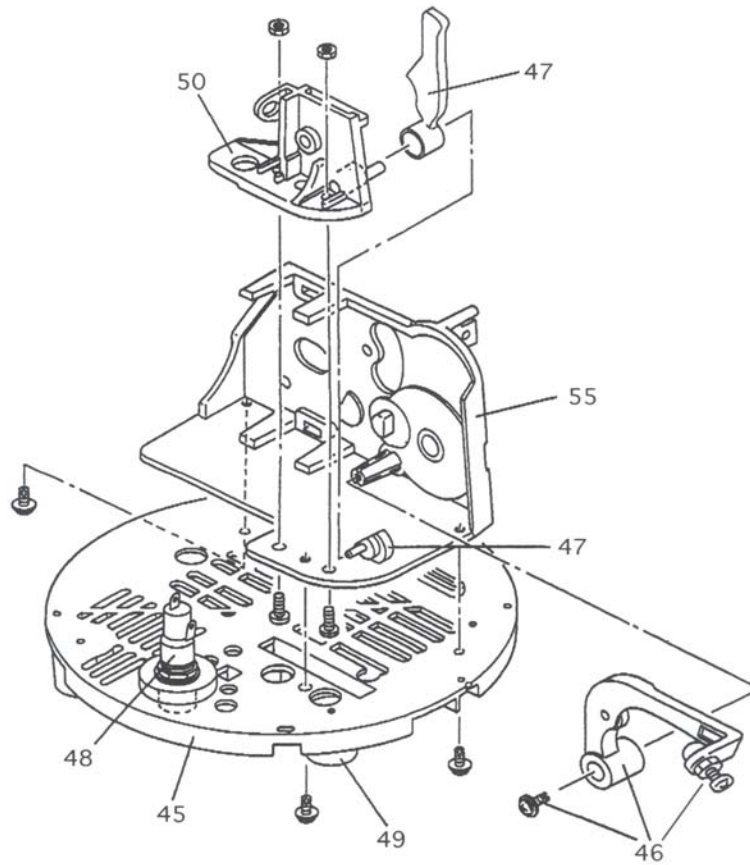
Z-CUT 2 - PARTS IDENTIFICATION CONTINUED:



Z-CUT 2 - PARTS IDENTIFICATION CONTINUED:



Z-CUT 2 - PARTS IDENTIFICATION CONTINUED:



Z-CUT 2 - PARTS IDENTIFICATION CONTINUED:

